



**N. S. WIBBERLEY**

*Award-winning, family-run Funeral Directors.  
Serving the local community with love.*



# *Funeral Services and Prices*

June 2025



# *Celebrating life, the way you want*

## **Meet some of our dedicated team**



We started N. S. Wibberley Funerals in 2018 after nearly a decade working for some of the most respected names in the industry. We knew we wanted to do things differently and, most of all, we wanted to serve the communities we've lived in all our lives.

Since starting the company, our work has grown to include a dedicated team of colleagues and many friends who have worked alongside us to serve the people of London, the home counties and beyond. We're still very proud to be a truly family-run firm and our bereaved families are reassured by knowing exactly who is taking care of their departed loved one.

Our families also value the opportunity to keep their loved ones close, as we are the only funeral directors in the centre of Beckenham with our own on-site mortuary. We have also partnered with other family-run local companies to ensure our clients are always receiving the highest possible standards.

People assume our work is sad and gloomy, but it couldn't be further from the truth. It's an honour to look after every person in our care and the friends and family who remember them. It's a beautiful thing to help people celebrate someone they love and bring their vision for the day to life.

**Nicholas & Rachael Wibberley**



I enjoy thinking creatively when speaking with families to arrange a funeral for their person who has died. I feel that it is so important to take the time to really listen and discover what they want

and need, and then gently suggest options they might want to consider that they may not know were possible in order to really give a bespoke service.

**Victoria Keen**  
Operations Coordinator



As a funeral administrator, I like interacting with bereaved families and helping them in any way I can to make the funeral arrangement an easy journey for them and make sure their loved

one gets a good send off. I get lots of satisfaction from knowing the family are pleased with the way we've helped them say goodbye. It is a privilege to do this important work with families.

**June Jones**  
Funeral Administrator

## AWARD WINNER

# *“Most compassionate Funeral Service in the South of England”*

- UK Enterprise Awards

### **Our philosophy on funerals**

We believe that a beautifully arranged funeral is more than a tradition and a farewell. It's an opportunity to celebrate a life, find peace and acceptance and bring calm to a time that can be filled with worry, sorrow and confusion.

When you work with us, we take our lead from you. We don't have set packages to sell and we won't push you to fit a mould. We know that every family is different and that's what makes our job so rewarding.

It's an honour we never take for granted and we are deeply invested in caring for both your family and the deceased to the highest standard. We love what we do and it shows in the way we do it.

### **How do our funerals work?**

We do not have a set of specific 'packages' to box you in to preselected options, but instead work with you to create a bespoke funeral which truly represents how you wish to remember your loved one.

#### **Our funerals are made up to four distinct parts:**

- Our service to the person who has died
- Our service to you
- Your personalised choices
- Third-party arrangements and charges

Nick and all the team at N. S. Wibberley have been incredibly helpful, efficient and flexible to our family and helped make organising our mother's funeral very straightforward and stress free. From the day Mum passed away to following up after the funeral they enabled us to focus on the positive side of remembering Mum. They were on hand for any minor issues arising and always had a helpful suggestion or a solution and they had great knowledge of options for the funeral, the service, flowers, music, reception but without being in any way pushy. I would certainly recommend this firm.

- from the Google Review of Ms Jessica Lang, funeral client

# Standardised Price List

All funeral directors are legally required to publish this Price List for a standardised set of products and services. This is to help you think through your options and make choices, and to let you compare prices between different funeral directors (because prices can vary).

**A more detailed explanation of N. S. Wibberley's bespoke prices is provided overleaf**

## ATTENDED FUNERAL (funeral director's charges only)

**£2790**

*This is a funeral where family and friends have a ceremony, event or service for the deceased person at the same time as they attend their burial or cremation.*

- Taking care of all necessary legal and administrative arrangements **£1150**
- Collecting and transporting the deceased person from the place of death (normally within 15 miles of the funeral director's premises) into the funeral director's care **£195**
- Care of the deceased person before the funeral in appropriate facilities. The deceased person will be kept at both the funeral director's branch premises and at other non-branch premises. **£595**
- Providing a suitable coffin – this will be made from wood effect veneer **£550**
- Viewing of the deceased person for family and friends, by appointment with the funeral director (where viewing is requested by the customer) **£0**
- At a date and time you agree with the funeral director, taking the deceased person direct to the agreed cemetery or crematorium (normally within 20 miles of the funeral director's premises) in a hearse or other appropriate vehicle **from £300**

## UNATTENDED FUNERAL

*This is a funeral where family and friends may choose to have a ceremony, event or service for the deceased person, but they do not attend the burial or cremation itself.*

- **Burial** (funeral director's charges only) **£1470**
- **Cremation** (funeral director's charges plus the cremation fee) **£1790**

## FEES YOU MUST PAY

For an Attended or Unattended burial funeral, the **burial fee**.<sup>1</sup>

In this local area, the typical cost of the burial fee for local residents is:

**from £2293**

For a new grave, you will also need to pay for the plot; for an existing grave with a memorial in place, you may need to pay a removal/replacement fee. In addition, the cemetery may charge a number of other fees.

For an Attended cremation funeral, the **cremation fee**.<sup>2</sup>

In this local area, the typical cost of a cremation for local residents is:

**£815 - £1395**

## ADDITIONAL FUNERAL DIRECTOR PRODUCTS & SERVICES

*This funeral director may be able to supply a range of optional, additional products and services, or to arrange (on your behalf) for a third party to supply them.*

*Examples include:*

- Additional mileage (price per mile) **£2.50**
- Additional transfers of the deceased person's body (e.g. to their home, to a place of worship etc.) (price per transfer) **Price on request**
- Collection and delivery of ashes **£0**
- Embalming **from £195**
- Funeral officiant (e.g. celebrant, minister of religion etc.) **from £250**
- Services supplied outside of normal office hours **Price on request**

*The funeral director can give you a full list of what they can supply. They are likely to charge for these additional products and services, so you may choose to take care of some arrangements without their involvement, or you can use a different supplier.*

<sup>1</sup> This fee (which is sometimes called the interment fee) is the charge made for digging and closing a new grave, or for reopening and closing an existing grave.

<sup>2</sup> In England, Wales and Northern Ireland, you will usually need to pay doctors' fees as well. This is the charge for two doctors to sign the Medical Certificates for Cremation.



# How our funerals are structured

Make your personal choices within each of the 4 sections below

## 1. Our Service to the Person who has died

### Professional Service & Care [£595]

- Caring for the deceased person and looking after them in our purpose built mortuary on-site in our funeral home in Beckenham, or our partner mortuary in Catford, for up to 21 days.
- Lovingly and carefully closing their eyes and mouth, to make them look as peaceful as possible.
- Washing them and dressing them as per your instructions, or supporting you in doing this.

### Bringing into our care

(only one of the below will apply)

- from a local hospital or coroner mortuary [£195]
- from a local private address or home within normal office hours [£275]
- from a local private address or home outside office hours [£335]
- collection of a bariatric deceased from a hospital or coroner [£350] (requiring 3 members of staff and/or specialist equipment)

## 2. Our Service to you, the family

### Full Professional Funeral Arrangement [£1150]

- Our care, attention and assistance with all the funeral arrangements *Including with any third parties like doctors, ministers, churches, musicians, crematoria and cemeteries.*
- Our professional preparation of all the legal, medical and administrative paperwork needed for the funeral.
- Unlimited support and guidance from our team of highly-trained professional funeral arrangers and directors.
- One of our experienced Funeral Directors to manage the logistics and proceedings on the day of the funeral. *They will make contact with you before the funeral to go through all the details, and on the day will manage the logistics of the cortege and vehicles, the bearers and other staff, the church or chapel attendant, the minister or celebrant, the grave-side or crematorium staff, and any or all other arrangements and proceedings to be managed during the funeral ceremonies.*
- Up to three visits to our on-site chapel of rest within office hours to spend time with the deceased prior to the funeral, if desired. *Organised by prior arrangement, these visits are an opportunity to spend time with your lost loved one, with the coffin either open or closed. More visits can be arranged if desired, and are priced per visit.*
- A personalised online funeral notice page to share details of the funeral with family and friends. Including a special link for charitable donations. *Hosted via muchloved.com, these pages are useful both for funeral arrangement announcements, for charitable donations, and for people to share memories and photos if they so wish.*
- Our assistance in the arrangement of floral tributes with one of our award-winning partner florists.
- Collection and care of the ashes after the funeral has taken place (if desired).

## 3. Personalised choices for the funeral

Choose from our extensive list of personalised choices for the funeral (listed overleaf), things such as:

- **The Coffin**  
Choose from our wide ranging selection of coffins from different suppliers all over the country and abroad.
- **The Vehicles**  
Choose how you would like the coffin to travel on the day of the funeral, and how you and your guests will travel.
- **The Pallbearers**  
Choose to bear (carry) the coffin yourselves, or for our professional pallbearers to do this for you. *Whether it is you or us, we must ensure we have enough bearers to safely transfer the coffin at every stage of the funeral day (including at the branch before the start of the funeral. If you choose to have our pallbearers, they are priced as follows:*

Professional Pallbearer for up to 3 hours	<b>£100 per bearer</b>
Extra time for each pallbearer over 3 hours	<b>£25 per hour</b>
- **Order of Service Booklets**  
Our professional assistance in the design and/or printing of booklets for the funeral service(s). *You can design and print the booklet entirely yourself, or we can design and print it for you. Alternatively, we can print a booklet you have designed or we can design the booklet for you to print externally. Our 'mix and match' prices are as follows:*

NSW Professional Designing Service	<b>£75</b>
Printing of 8-page booklets	<b>£1.25 per copy</b>
Printing of 16-page booklets	<b>£1.75 per copy</b>

*Further options and other forms of printed stationery are also available upon request*

## 4. Third-party charges for the funeral

The third-party charges are any charges from external organisations which, for ease, we pay on your behalf. These might typically include the crematorium or cemetery, as well as celebrants or ministers. **Some local examples of these third-party charges are given overleaf.**

# Itemised Service & Price List

## including Additional Services

### Care of the Deceased

#### Dressing & Clothing

Purchase of N. S. Wibberley Company Gown	£35
Dressing in clothing provided by family	£0
Deceased to remain in clothing already dressed	£0

#### Transfers & Storage

Transfer of deceased from mortuary to branch chapel	£0
Extra / other transfers of deceased requested by family	<i>Price on request</i>
Storage & care of deceased beyond 21 days	£12 per day

#### Embalming

Embalming for a funeral in the UK	£195
Embalming for a repatriation and/or long stay	£245
Embalming of deceased with an infectious disease	£395

### Vehicles

#### Extra time for vehicles

Extra time for vehicles beyond 3 hours ( <i>door to door from us</i> )	£60 per hour
--	--------------

#### Traditional Hearses & Limousines

Simple Vauxhall hearse	£300
Traditional black motorised hearse	£495
Traditional black limousine for up to 6 mourners	£315

#### Alternative Hearses

Horse-drawn hearse	from £1350
Non-black traditional hearse ( <i>white, silver, pink, gold</i> )	from £635
Motorbike hearse ( <i>different options available</i> )	from £995
VW Campervan hearse	from £995
Rainbow or Leopard-print hearse	from £650

### Additional Options

#### Videography & Photography

Use of church livestreaming facility	<i>Price on request</i>
Use of crematorium livestreaming facility	<i>Price on request</i>
Professional videographer to livestream the funeral	from £695
Professional photographer for the funeral	from £495

#### Grave Markers

Large wooden cross or plaque to mark the grave	£85
--	-----

#### Releasing of Doves

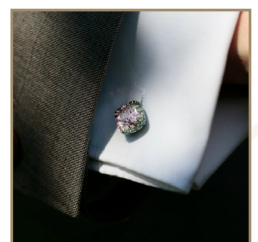
Releasing of one dove ( <i>including handler's fee</i> )	£145
Additional doves	£30 each

### Other Services & Products

#### Mere Glass Jewellery [from £89.99]

Mere Glass Memorial Jewellery based in the Lake District is made by fusing cremation ashes between two layers of glass creating a mesmerising, colour-shifting glass jewel with the ashes inside.

Each piece of jewellery containing cremation ashes is fired separately from the rest of their work.



#### Stuart Wiltshire Ashes into Glass [from £80]

At Stuart Wiltshire Glass, your loved ones Cremation Ashes can be preserved in Crystal and Glass forever. They have a wide range of glass shapes to choose from, whilst also offering bespoke options for those more unique ideas. Stuart has been a glass artist for almost 30 years and his professionalism and creativeness will ensure your loved ones are preserved in the finest quality that can be treasured for a lifetime.



#### Ashes to Blooms [from £20]

Ashes to Blooms wildflower memorial seed balls are produced by their family business, individually, by-hand close to the South Downs.

The method of production allows them to provide you with the bespoke service that you & your loved one deserve. They don't produce in 'batches', we treat each order individually & it receives our undivided attention.



## Local Crematoria & Cemeteries (correct in May 2025)

### Beckenham Crematorium

Standard adult cremation (Monday - Wednesday)	£1295
Standard adult cremation (Thursday - Saturday)	£1395
Unattended ('direct') cremation	£400

### Croydon Crematorium

Standard adult cremation	£1056
Reduced fee cremation (early morning, late afternoon, etc)	£815
Unattended ('direct') cremation	£330

### Hither Green Crematorium

Standard adult cremation	£1010
Reduced fee cremation (early morning, late afternoon, etc)	£835
Unattended ('direct') cremation	£310/£431

### Eltham Crematorium

Standard adult cremation	£989
Reduced fee cremation (early morning, late afternoon, etc)	£933
Unattended ('direct') cremation	£435

### Bluebell Crematorium

Standard adult cremation	£1095
Reduced fee cremation (30 minutes only, at 9:15am only)	£750
Unattended ('direct') cremation	£400

### Elmer's End Cemetery

"Prestige"	No longer available
Full memorial graves	from £12999
Interment ("digging") fees are payable on top of these prices	

### Croydon Borough Cemeteries

New graves for borough residents	from £4315
New graves for non borough residents	from £8628
Interment ("digging") fees are payable on top of these prices	

### Lewisham Borough Cemeteries

New graves for borough residents	from £3139
New graves for non borough residents	from £8078
Interment ("digging") fees are payable on top of these prices	

### Bromley Borough Cemeteries

New graves for borough residents	from £2293
New graves for non borough residents	from £9168
Interment ("digging") fees are payable on top of these prices	

### Bluebell Cemetery

Lawn / woodland graves	from £3265
Full memorial graves	from £5995
Interment ("digging") fees are payable on top of these prices	

## Terms of Business

### 1. Initial Invoice and Deposit:

Upon agreeing to the funeral estimate, the estimate will be automatically converted into an invoice.

A deposit of 50% of our internal charges plus 100% of the third-party charges is due at the time of arrangement.

### 2. Estimate Balance Payment:

The remaining balance on the initial invoice is due 5 working days before the funeral service.

### 3. Supplementary Invoices:

Any changes to instructions, additional services, extra time for vehicles, or other modifications to the initial estimate will be recorded on a separate supplementary invoice.

The supplementary invoice will be issued 7 days after the funeral service.

#### Exceptions:

The initial deposit requirement can be waived if the funeral account will be paid in full by either the deceased's bank or by an insurance policy.

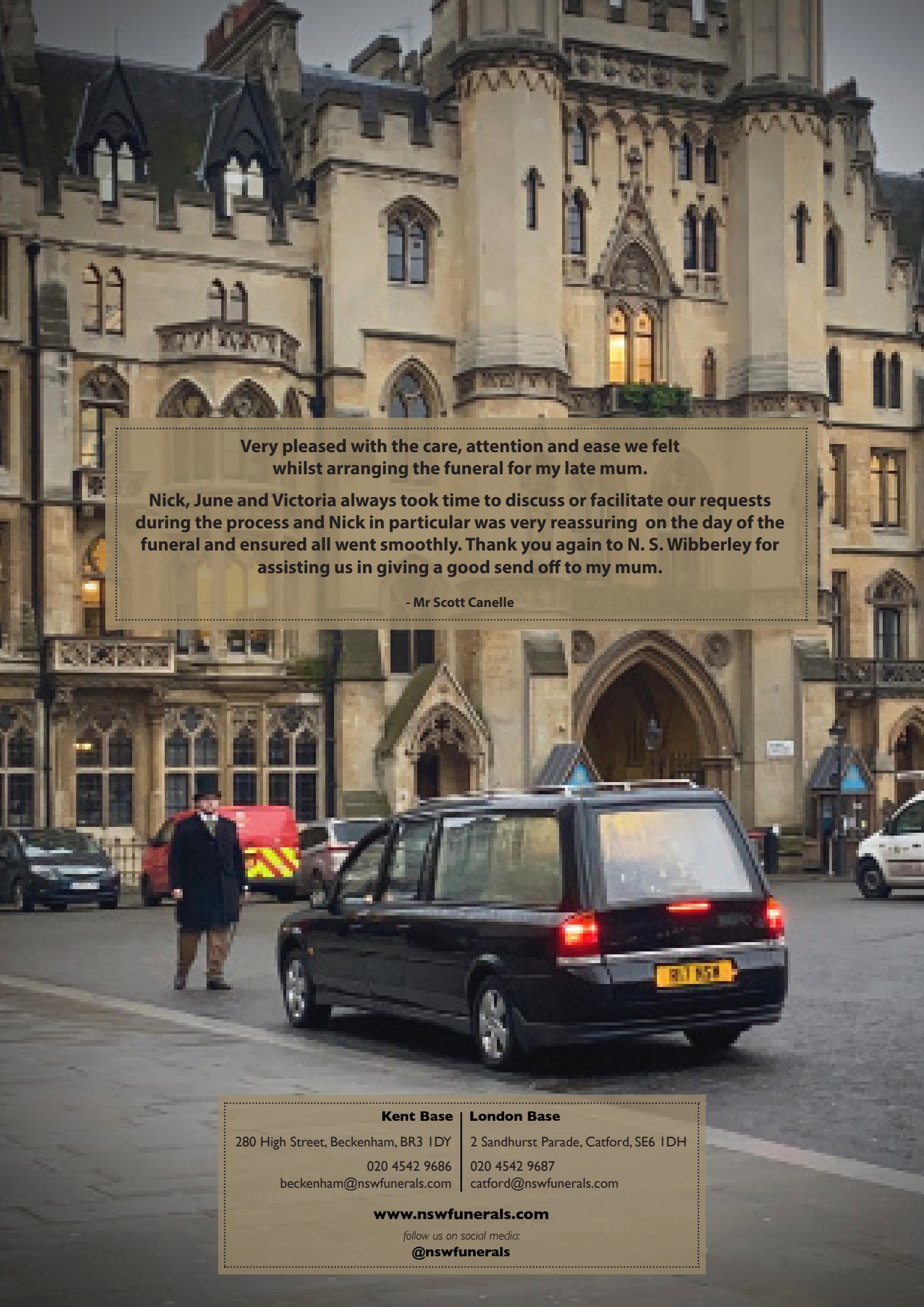
N. S. Wibberley Funerals Ltd reserves the right to charge weekly interest at the Bank of England standard rate for payments outstanding after 60 days.

## Disclosure of Interests

N. S. Wibberley Funerals Ltd is a private limited company, ultimately owned jointly by Nicholas Wibberley & Rachael Pereira Wibberley, along with some minority shareholders.

We have no business or financial interest in any price comparison website which compares Funeral Director Services and/or Crematoria Services and their respective prices.

In the last six months, we have not made any material charitable donation, charitable contribution, or payment of a gratuity to a third party connected to the funeral sector.



**Very pleased with the care, attention and ease we felt whilst arranging the funeral for my late mum.**

**Nick, June and Victoria always took time to discuss or facilitate our requests during the process and Nick in particular was very reassuring on the day of the funeral and ensured all went smoothly. Thank you again to N. S. Wibberley for assisting us in giving a good send off to my mum.**

**- Mr Scott Canelle**



**Kent Base**

280 High Street, Beckenham, BR3 1DY

020 4542 9686

beckenham@nswfunerals.com

**London Base**

2 Sandhurst Parade, Catford, SE6 1DH

020 4542 9687

catford@nswfunerals.com

**[www.nswfunerals.com](http://www.nswfunerals.com)**

*follow us on social media:*

**@nswfunerals**